

# VECMAP® Desktop component Requirements

VECMAP® has certain requirements to work on Windows PC's.

## Operating systems supported

- Windows 10 64-bit (October 2018 Update)
- Windows 10 64-bit (April 2018 Update)
- Windows 10 64-bit (Fall Creators Update)
- Windows 10 64-bit (Creators Update)
- Windows 10 64-bit (Anniversary Update)
- Windows 8.1 64-bit
- Windows 7 SP2 64-bit

\* For Apple computers see section below.

## Hardware requirements

- Intel Core i5 "Haswell" or better
- 4GB of RAM, 8GB or more recommended
- 2 GB of free disk space for the software
- 45 GB of free disk space for ModelBoost®
- 1440x900 resolution display, Full HD (1920x1080) or more recommended

## Notes

Installing VECMAP® or VECMAP® updates requires administrator access to the computer.

Windows 7 SP2 users are recommended to make sure they installed all the latest updates from Windows Update before installing VECMAP®.

The installer only comes as an EXE, we do not currently provide an MSI package for enterprise environments.

The VECMAP® installer installs Dongle drivers and a Dongle server service (CBIOS).

All software and supporting files are installed to Program Files. Any supporting files created and/or modified during use of the software are stored in AppData Local. Some files may be stored in Common ProgramData in future. Uninstalling VECMAP® removes the Dongle server service (CBIOS), but not the files created in AppData Local.

Both VECMAP<sup>®</sup> installers include R and the required R packages for VECMAP<sup>®</sup>. The VECMAP<sup>®</sup> installer does not require an internet connection to install. The full package installer contains all required dependency system libraries and will install those without internet. The program only installer will not have the dependency system libraries, and the user would have to first manually download and install those if they are missing from the system.

R software icons are no longer installed to the user's desktop. R packages installed for VECMAP<sup>®</sup> are not accessible when using R outside of VECMAP<sup>®</sup>.

### Windows 10 Lifecycle

Windows 10	Version	Date of availability	End of service
Anniversary Update	1607	2 August 2016	9 April 2019
Creators Update	1703	5 April 2017	8 October 2019
Fall Creators Update	1709	17 October 2017	14 April 2020
April 2018 Update	1803	30 April 2018	10 November 2020
October 2018 Update	1809	13 November 2018	11 May 2021
"Spring (May) 2019 Update"	1903	May 2019	
Component	Program Only Installer	Full Package Installer	
VECMAP Software	✓	✓	
Dongle Software	✓	✓	
.NET Framework 4.7.2		✓	
Microsoft Visual C++ 2015 Redistributable x64		✓	
R 3.4.4		✓	
R Packages	✓	✓	

There are two versions of the program installer:

- Full Package Installer: one with the dependency system libraries + the VECMAP<sup>®</sup> software
- Program Only Installer: one with only the VECMAP<sup>®</sup> software

Windows Version	.NET Framework
Windows 10 64-bit October 2018 Update	Includes .NET Framework 4.7.2
Windows 10 64-bit April 2018 Update	Includes .NET Framework 4.7.2
Windows 10 64-bit Fall Creators Update	Includes .NET Framework 4.7.1 Requires update to .NET Framework 4.7.2
Windows 10 64-bit Creators Update	Includes .NET Framework 4.7 Requires update to .NET Framework 4.7.2
Windows 10 64-bit Anniversary Update	Includes .NET Framework 4.6.2 Requires update to .NET Framework 4.7.2
Windows 8.1 64-bit	Includes .NET Framework 4.5.1 Requires update to .NET Framework 4.7.2
Windows 7 SP2 64-bit	Includes .NET Framework 3.5.1 Requires install of .NET Framework 4 Requires install of .NET Framework 4.5 Requires update to .NET Framework 4.7.2

## Codesigning

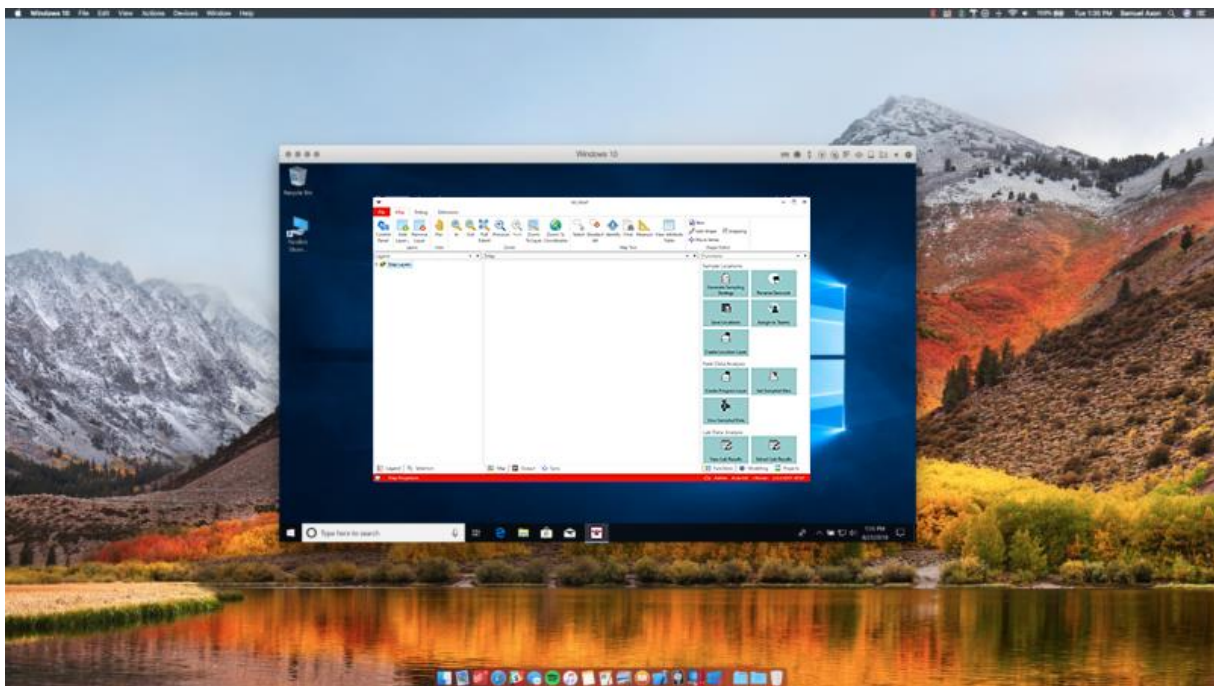
The VECMAP<sup>®</sup> desktop installer is code signed using an Avia-GIS certificate. This means when you double click the installer program, in the Windows administrator dialog, it will identify that the program came from Avia-GIS, and not an "unidentified developer". This only works on Windows 8.1 and Windows 10, on Windows 7 it will still say "unidentified developer".

## Apple Computers

The VECMAP® Desktop component requires Windows but can be used on Apple hardware if Windows is installed\*. Windows can be used on Apple hardware using Boot Camp or virtualisation.

Apple provides a Boot Camp Assistant multi boot utility with macOS. Using this utility, a Microsoft Windows OS can be installed on Apple Macintosh computers next to the existing macOS installation. You choose to boot your Apple Macintosh with macOS or with Windows. Booting into Windows the VECMAP® Desktop component can be installed and used like on any regular Windows OS PC.

Through virtualisation you can create virtual computers on your existing computer, inside your existing OS. There are several virtualisation solutions available for macOS\*\*: Parallels Desktop, VMWare Fusion, and VirtualBox. This software allows you to set up a virtual PC running as an application in your macOS, where Windows OS can be installed. Booting this virtual Windows PC, the VECMAP® Desktop component can be installed and used like on any regular Windows OS PC, next to your macOS applications.



\* A valid and legal copy of a supported Windows OS is required for installation.

\*\* Virtualisation software may need to be purchased separately.